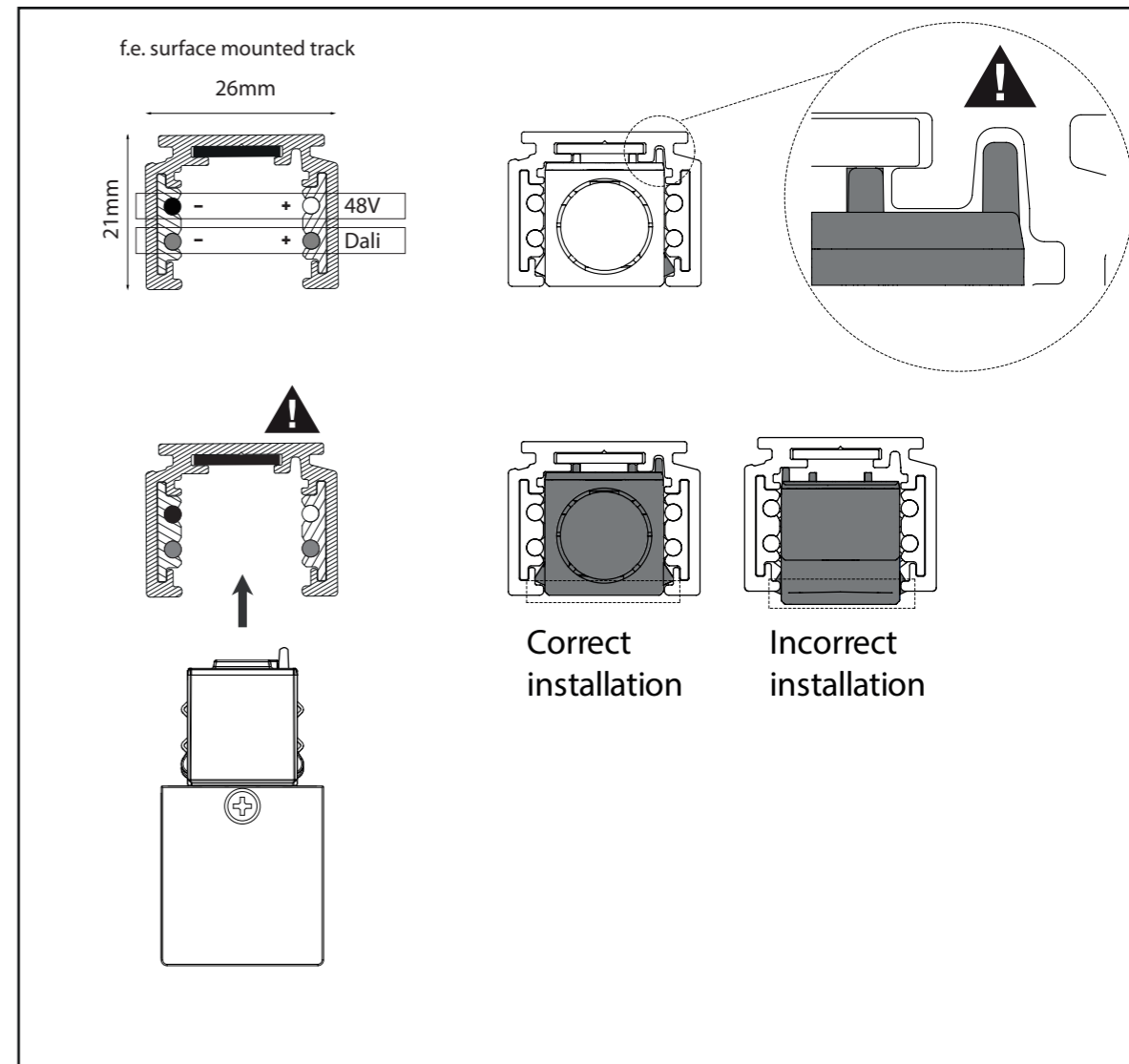
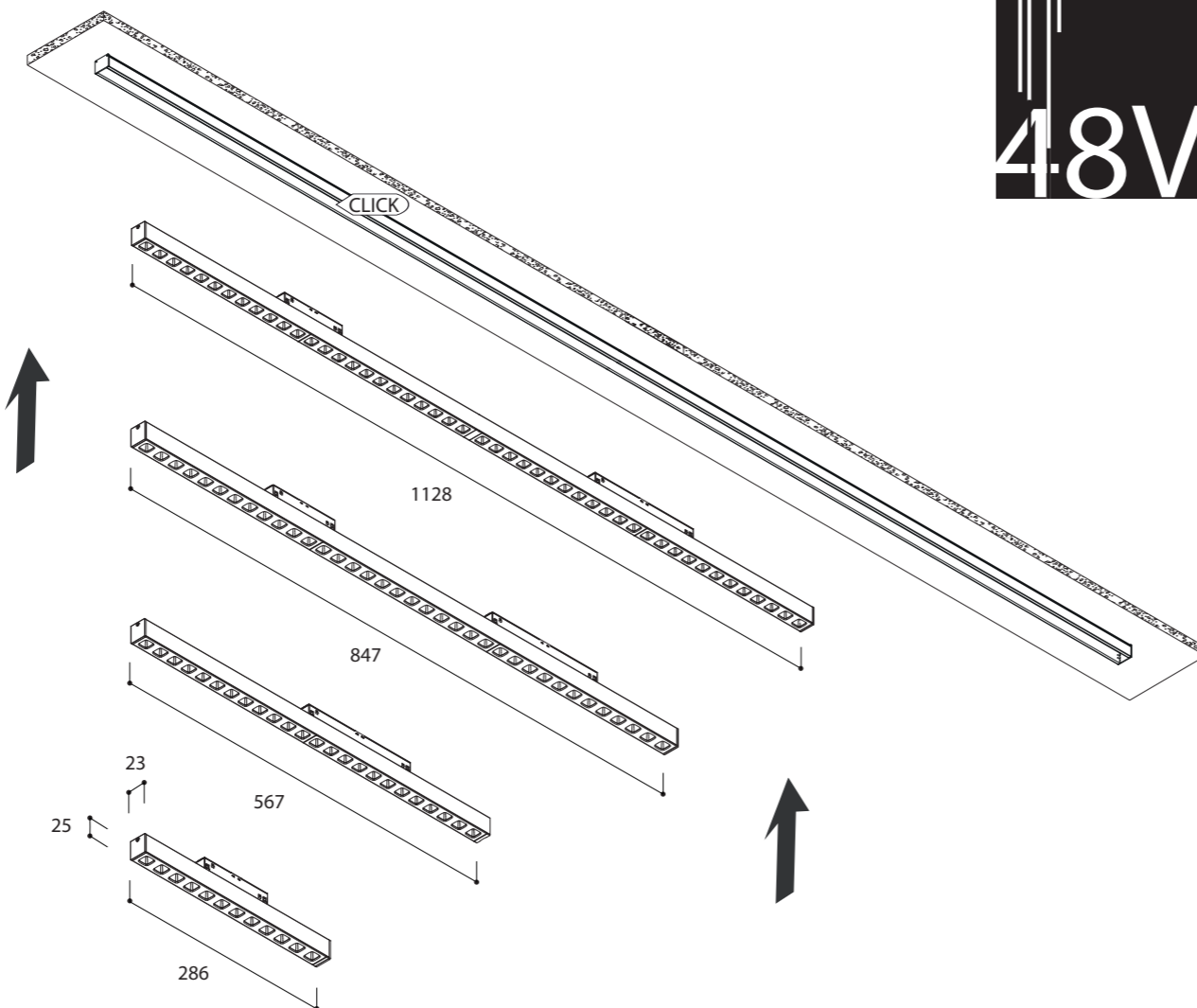


MAGNETIC LEDLINES TRACK 48V UGR

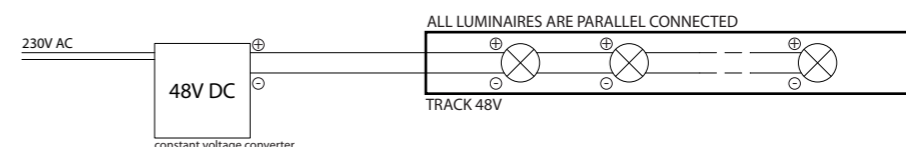
INSTALLATION



446711	MAGNETIC LED 48V L286 2700K CRI90 UGR	BLACK
446705	MAGNETIC LED 48V L286 2700K CRI90 UGR DALI	BLACK
446709	MAGNETIC LED 48V L286 3000K CRI90 UGR	BLACK
446703	MAGNETIC LED 48V L286 3000K CRI90 UGR DALI	BLACK
446710	MAGNETIC LED 48V L286 4000K CRI90 UGR	BLACK
446704	MAGNETIC LED 48V L286 4000K CRI90 UGR DALI	BLACK
446765	MAGNETIC LED 48V L286 2700K CRI90 UGR	WHITE
446759	MAGNETIC LED 48V L286 2700K CRI90 UGR DALI	WHITE
446763	MAGNETIC LED 48V L286 3000K CRI90 UGR	WHITE
446757	MAGNETIC LED 48V L286 3000K CRI90 UGR DALI	WHITE
446764	MAGNETIC LED 48V L286 4000K CRI90 UGR	WHITE
446758	MAGNETIC LED 48V L286 4000K CRI90 UGR DALI	WHITE
446723	MAGNETIC LED 48V L567 2700K CRI90 UGR	BLACK
446717	MAGNETIC LED 48V L567 2700K CRI90 UGR DALI	BLACK
446721	MAGNETIC LED 48V L567 3000K CRI90 UGR	BLACK
446715	MAGNETIC LED 48V L567 3000K CRI90 UGR DALI	BLACK
446722	MAGNETIC LED 48V L567 4000K CRI90 UGR	BLACK
446716	MAGNETIC LED 48V L567 4000K CRI90 UGR DALI	BLACK
446777	MAGNETIC LED 48V L567 2700K CRI90 UGR	WHITE
446771	MAGNETIC LED 48V L567 2700K CRI90 UGR DALI	WHITE
446775	MAGNETIC LED 48V L567 3000K CRI90 UGR	WHITE
446769	MAGNETIC LED 48V L567 3000K CRI90 UGR DALI	WHITE
446776	MAGNETIC LED 48V L567 4000K CRI90 UGR	WHITE
446770	MAGNETIC LED 48V L567 4000K CRI90 UGR DALI	WHITE
446735	MAGNETIC LED 48V L847 2700K CRI90 UGR	BLACK
446729	MAGNETIC LED 48V L847 2700K CRI90 UGR DALI	BLACK
446733	MAGNETIC LED 48V L847 3000K CRI90 UGR	BLACK
446727	MAGNETIC LED 48V L847 3000K CRI90 UGR DALI	BLACK
446734	MAGNETIC LED 48V L847 4000K CRI90 UGR	BLACK
446728	MAGNETIC LED 48V L847 4000K CRI90 UGR DALI	BLACK
446789	MAGNETIC LED 48V L847 2700K CRI90 UGR	WHITE
446783	MAGNETIC LED 48V L847 2700K CRI90 UGR DALI	WHITE
446787	MAGNETIC LED 48V L847 3000K CRI90 UGR	WHITE
446781	MAGNETIC LED 48V L847 3000K CRI90 UGR DALI	WHITE
446788	MAGNETIC LED 48V L847 4000K CRI90 UGR	WHITE
446782	MAGNETIC LED 48V L847 4000K CRI90 UGR DALI	WHITE
446747	MAGNETIC LED 48V L1128 2700K CRI90 UGR	BLACK
446741	MAGNETIC LED 48V L1128 2700K CRI90 UGR DALI	BLACK
446745	MAGNETIC LED 48V L1128 3000K CRI90 UGR	BLACK
446739	MAGNETIC LED 48V L1128 3000K CRI90 UGR DALI	BLACK
446746	MAGNETIC LED 48V L1128 4000K CRI90 UGR	BLACK
446740	MAGNETIC LED 48V L1128 4000K CRI90 UGR DALI	BLACK
446801	MAGNETIC LED 48V L1128 2700K CRI90 UGR	WHITE
446795	MAGNETIC LED 48V L1128 2700K CRI90 UGR DALI	WHITE
446799	MAGNETIC LED 48V L1128 3000K CRI90 UGR	WHITE
446793	MAGNETIC LED 48V L1128 3000K CRI90 UGR DALI	WHITE
446800	MAGNETIC LED 48V L1128 4000K CRI90 UGR	WHITE
446794	MAGNETIC LED 48V L1128 4000K CRI90 UGR DALI	WHITE

Length (mm)	286	567	847	1128
safe distance to object	☰ - 0,1m - ☷			
lamp / (lum.flux) / (colortemp)	Ledarray 569lm/579lm/620lm 2700K / 3000K / 4000K	1139lm/1159lm/1241lm 2700K / 3000K / 4000K	1708lm/1739lm/1862lm 2700K / 3000K / 4000K	2050lm/2087lm/2235lm 2700K / 3000K / 4000K
fitting	None			
power	5.6W	10.2W	15.2W	18.2W
voltage	48V DC			
symbol	⚡			
gear	Converter incorporated			
ip/class	IP20			
application	Ceiling mounted			
light distribution	Directional			
dimmiability	Not dimm or DALI dimmable			
weight				
CRI	90			
SDCM	2.5			

ALWAYS DISCONNECT MAINS POWER SUPPLY FROM CONVERTER BEFORE SWITCHING "ON" LED LUMINAIRES TO PREVENT HOT PLUGGING ISSUES



FOR COMPATIBLE CONVERTERS SEE LEDCONVERTER MATRIX

INSTALLATIE- EN ONDERHOUDSRICHTLIJNEN m.b.t. FABRIEKSGARANTIE.  
1. DE VERBINDINGEN EN HET UITTESTEN VAN DEZE TOESTELLEN DIENEN ALTIJD TE GEBEUREN DOOR EEN ERKEND ELECTRO-INSTALLATEUR.  
2. DEZE VERLICHTINGSTOESTELLEN MOETEN GE-INSTALLEERD, VERBONDEN EN GETEST WORDEN VOLGENS DE NATIONAAL GELDENDE REGLEMENTEN OP DE ELECTRISCHE INSTALLATIES (BELGIE?, A.R.E.I., DUITSLAND: DIN VDE 0100 TEIL 559 A2, ...; DEZE OPSOMMING IS LOUWER INFORMATIEF)  
3. DE TECHNISCHE BIJLUITER MOET GEZIEN WORDEN ALS ONDERDEEL VAN DE ALGEMENE VERKOOPVOORWAARDEN VAN TAL N.V.  
4. DE ELECTRO-INSTALLATEUR IS VERANTWOORDELIJK VOOR HET GEBRUIKEN VAN VOORSCHAKELAPPARATUUR DIE VOLDOET AAN DE GELDENDE CE EN EMC NORMEN.  
5. VERVANG DE LAMP (-EN) ALTIJD MET DE GROOTSTE ZORG, ZE IS (ZIJN) UITERST BREEKBAAR.  
6. OPGEPAST: PLAATS NOOIT DE LAMP MET BLOTE HANDEN, GEBRUIK ALTIJD EEN DOEK!

INSTRUCTIONS D'INSTALLATION ET D'ENTRETIEN A RESPECTER VIS-A-VIS DE LA GARANTIE.  
1. LE PLACEMENT, LE RACCORDEMENT ET L'ESSAI DE CET APPAREIL DOIVENT TOUJOURS ETRE EFFECTUES PAR UN INSTALLATEUR ELECTRICIEN AGREE.  
2. LES LUMINAIRES DOIVENT ETRE INSTALLEZ, BRANCHES ET TESTES SUIVANT LE REGLEMENT NATIONAL SUR LES INSTALLATIONS ELECTRIQUES EN VIGUEUR. (BELGIQUE, A.R.E.I., ALLEMAGNE: DIN VDE 0100 TEIL 559 A2, ...; CETTE ENUMERATION EST INDICATIVE)  
3. CE MANUEL D'INSTALLATION TECHNIQUE REPRESENTE UNE PARTIE DES CONDITIONS GENERALES DE VENTE DE TAL N.V.  
4. L'ELECTRO-INSTALLATEUR EST RESPONSABLE POUR L'USAGE DE BALLASTS, TRANSFO'S...CONFORMES AUX NORMES CE ET EMC EN VIGUEUR.  
5. REMPLACEZ TOUJOURS L'AMPOULE (LES AMPOULES) AVEC PRUDENCE; ELLE(-S) EST (SONT) TRES FRAGILE (-S).  
6. ATTENTION: NE JAMAIS REMPLACER L'AMPOULE AUX MAINS NUES, UTILISEZ TOUJOURS UN CHIFFON!

INSTALLATION AND MAINTENANCE INSTRUCTIONS IN VIEW OF THE MANUFACTURER'S GUARANTEE.  
1. THE CONNECTION AND TESTING OF THE DEVICES SHOULD ALWAYS BE PERFORMED BY A RECOGNIZED ELECTRICIAN.  
2. THESE LIGHTING DEVICES NEED TO BE INSTALLED, CONNECTED AND TESTED FOLLOWING THE OFFICIAL NATIONAL INSTRUCTION GUIDE FOR ELECTRICAL INSTALLATIONS (BELGIUM, A.R.E.I., GERMANY: DIN VDE 0100 TEIL 559 A2, ...; THIS ENUMERATION IS JUST AN INDICATION)  
3. THIS TECHNICAL ENCLOSURE NEEDS TO BE ADDED TO THE GENERAL SALES CONDITION OF THE TAL N.V.  
4. THE ELECTRO TECHNICIAN IS RESPONSABLE TO USE BALLASTS, TRANSFORMERS,...WHICH MEET THE VALID CE AND EMC RULES.  
5. ALWAYS REPLACE THE LAMP (-S) WITH UTMOST CAUTIONSNESS, THE LAMP (-S) IS (ARE) VERY FRAGILE.  
6. ATTENTION: NEVER REPLACE THE LAMP WITH BARE HANDS, ALWAYS USE A CLOTH!

MONTAGE- UN UNTERHALT INSTRUCTIONEN ZU BEACHTEN MIT BEZUG AUF DER GARANTIE.  
1. DIE MONTAGE, DER ANSCHLUSS UND DAS AUSTESTEN DER LEUCHTEN SOLL IMMER VON EINEM ZUSTAENDIGEN ELECTRO-INSTALLATEUR AUSGEFUHRT WERDEN.  
2. DIESE LEUCHTEN MUESSEN INSTALLIERT, ANGEGLOSSEN UND GETESTET WERDEN NACH DER ALLGEMEINEN NAZIONALEN REGLEMENTATION UBER DIE ELEKTRISCHE INSTALLATIONEN (BELGIEN, A.R.E.I., DEUTSCHLAND: DIN VDE 0100 TEIL 559 A2, ...; DIESE AUFSTELLUNG GESCHICHT DURCH EXEMPLATIVEN TITEL UND KANN NICHT ALS LIMITATIV ODER EXHAUTIV BETRACHTET WERDEN).  
3. DIESE TECHNISCHE GEBRAUCHSANWEISUNG GEHORT ZU DEN ALLGEMEINEN VERKAUFSBEDINGUNGEN VON TAL N.V.  
4. DER ELEKTRO-INSTALLATEUR IST VERANTWORTLICH FUR DAS VERWENDEN VON CE UND EMC GEPRUFTE VORSCHALTGERAETE.  
5. DIE LAMPE(-N) SOLL(-EN) IMMER SERH VORSICHTIG ERSAETZT WERDEN.  
6. VORSICHT: MAN DARF NIE DIE LAMPE MIT DEN NACKTEN HAENDEN BERUHREN, MAN SOLL IMMER EINEN TUCH BENUTZEN!